

17+ overseas agents, products are exported to 60+ countries and regions



INDUSTRIAL X-RAY INTELLIGENT INSPECTION EXPERT



UNICOMP TECHNOLOGY CORPORATE:

Wuxi Unicomp Technology Co., Ltd (HQ)
No. 11, Lijiang Road, Xinwu District, Wuxi City, Jiangsu Province, P.R.C.
Zip Code: 214112
TEL: +86-510-68506688 FAX: +86-510-81816018

Chongqing Unicomp Technology Co., Ltd
1st Building, No.23 Fushun Blvd, Biquan Street, Bishan District, ChongQing, P.R.C.
Zip Code: 402760
TEL: +86-23-63226131 FAX: +86-23-63228366

Shenzhen Unicomp Technology Co., Ltd
Building 2A, Baoxin Technology Park, Guangyuan 5th Road, Guangming District, Shenzhen,
Guangdong Province P.R.C. Zip:518107
TEL: +86-755-26650316 FAX: +86-755-26650296



Scan the QR-Code to visit
more information

www.global-xray.com
www.unicomp.cn



CONTENTS

- Company Profiles 01
- Company History & NDT X-Ray Series 02
- Introduction and Application 04
- Automotive Parts NDT Real-time Imaging X-ray UNC160 06
- Industrial 3D CT NDT X-Ray UNCT 1000 08
- Small Casting NDT Real-time Imaging X-ray Equipment UNC160S 10
- Precision Casting NDT Real-time Imaging X-Ray UNC130 12
- General Utilization NDT Real-time Imaging X-ray UNC225π 14
- Industrial 3D CT NDT X-Ray UNCT 2000 16
- Aluminum & Iron Casting NDT Real-time Imaging X-ray UNC320 18
- Ductile Iron NDT Real-time Imaging X-ray UNC450 20
- General Utilization In-line NDT Real-time Imaging X-ray UNC160-C-L 22
- Cross Over Dual Manipulator NDT X-ray 24
- Wheel Hub On-line NDT X-ray Real-time imaging Equipment UNI160-Y2-D9 26
- Online cylinder X-ray real-time imaging detection system UNC225-05C5-F 28
- Weld joint X-ray real-time imaging inspection equipment 30
- Portable X-ray Flaw Detector 32
- Valued Customers (Partial) 34
- Installation cases (Partial) 36



“ Be a Foremost Corporation in X-Ray Technology Be a Globally Respectful Corporation in The Branding Creation

Founded in 2002, Unicom Technology is a national high-tech enterprise engaged in the research and development and manufacture of precision X-ray technology research and high-end X-ray intelligent inspection equipment. It has developed into the leader of the global industry and the owner of the fourth micro-scale X-ray source technology in the world. Its project has filled a number of domestic technical gaps. Intelligent detection equipment based on this technology has been widely used in electronic manufacturing (EMS), semiconductor, lithium battery, solar photovoltaic, LED, precision castings, tire hubs, pressure vessels, security, food and agriculture industries.

Unicom Technology has a senior professional team with many years of experience in China and foreign countries, and has built a high-level technology platform "Academician Workstation". The company has undertaken major scientific and technological public relations projects such as "02 Special Project" and "863 Program" at the national level, and has determined the research and development of "Industry 4.0" X-ray intelligent detection technology based on cloud computing and big data, and the Chinese

Academy of Sciences, Tsinghua University and South China Institute of Technology. Universities, Huazhong University of Science and Technology, Shenzhen University and other universities and research institutes have cooperated in production, education and research, and jointly realized the development of X-ray key components and the core technology of ray imaging. More than 430 patents have been obtained. Unicom Technology owns three modern management R&D and production bases in Wuxi, Shenzhen and Chongqing, and has a software company. Sales and service offices are located in Shenyang, Tianjin, Xi'an, Qingdao and Chengdu. The company has seven overseas agents, forming a strong distribution and service network around the world.

Founded in 2011, Chongqing Unicom Technology Co., Ltd. is a national high-tech enterprise specializing in the research, development, production and sales of industrial second and third types of radiation testing equipment. The company has a number of independent intellectual property rights, and cooperates with Chinese Academy of Sciences, Tsinghua University and other universities and research institutions to develop breakthrough core technologies. This technology is mainly used for the quality and internal defect detection of various types of die-casting parts, boiler welded pipes, steel pipes, steel cylinders, automobile wheels, tires, pressure vessels and other products. Today, Chongqing Unicom Technology has sales and service offices in Beijing, Shenyang, Tianjin, Xi'an, Qingdao, Wuhan, Chengdu, Ningbo, Xiamen and other domestic regions. Distribution and service outlets in the United States, Mexico, Europe, the United Kingdom, Russia, Brazil, Ecuador, Australia, the Middle East and Southeast Asia. Unicom Technology is committed to the brand route, and the "UNICOMP" brand is now well-known in the industry at home and abroad. Its customers include BMW, Benz, Tesla, Audi, Nissan, Sony, Panasonic, LG, Toyota, ABB, Omron, Philips, Toshiba, Siemens, Canon, GM, BYD Automotive, Honda, SSW, Changan Automobile, FAW Volkswagen, Dongfeng Group, CTAL, China Aerospace, China Ordnance Industry, ABB, Jiangxi Long March, Foxconn, Panasonic Many internationally renowned companies.

Company History

- 2022 Chongqing Unicom NDT X-ray factory relocates to a new Hi-Tech Industry Park with 10,000 sqm Facility
- 2020 Application of new generation of X-ray image processing software based on AI algorithms
- 2018 Wuxi headquarters 40,000 sqm Industrial Park completed and put into operation.
- 2016 Vehicle Screening system, Baggage X-ray Scanning, Plice Check Point launched into market of postal, logistics, transportation, etc.
- 2014 R&D and production of X-ray intensifier; X-ray detection machines for Food/Bag/Footwear foreign matter hit the market
- 2013 X-Ray Detection equipment for auto aluminum & iron castings, wheels, steel pipe & cylinder launched into the market
- 2011 Establishment of industrial NDT X-Ray R&D and Production base in Chongqing
- 2010 R&D for advanced X-Ray Tube
- 2009 Wuxi Unicom Technology was established Market a series of X-Ray inspection equipment
- 2007 R&D and production of X-Ray inspection Equipment
- 2006 Stencil cleaner & SPI launched into EMS industry
- 2004 Electronics Equipments export
- 2002 Shenzhen Unicom Technology was established



Chongqing Unicom



Reception



Workshop



Management Team

NDT X-Ray Series



UNC-160

Automotive Parts NDT Real-time Imaging X-ray



UNCT 1000

Industrial 3D CT NDT X-Ray



UNZ 450

General Utilization On-line NDT Real-time Imaging X-ray



UNI160-Y2-D9

Wheel Hub On-line NDT X-ray Equipment



UNC225-05C5-F

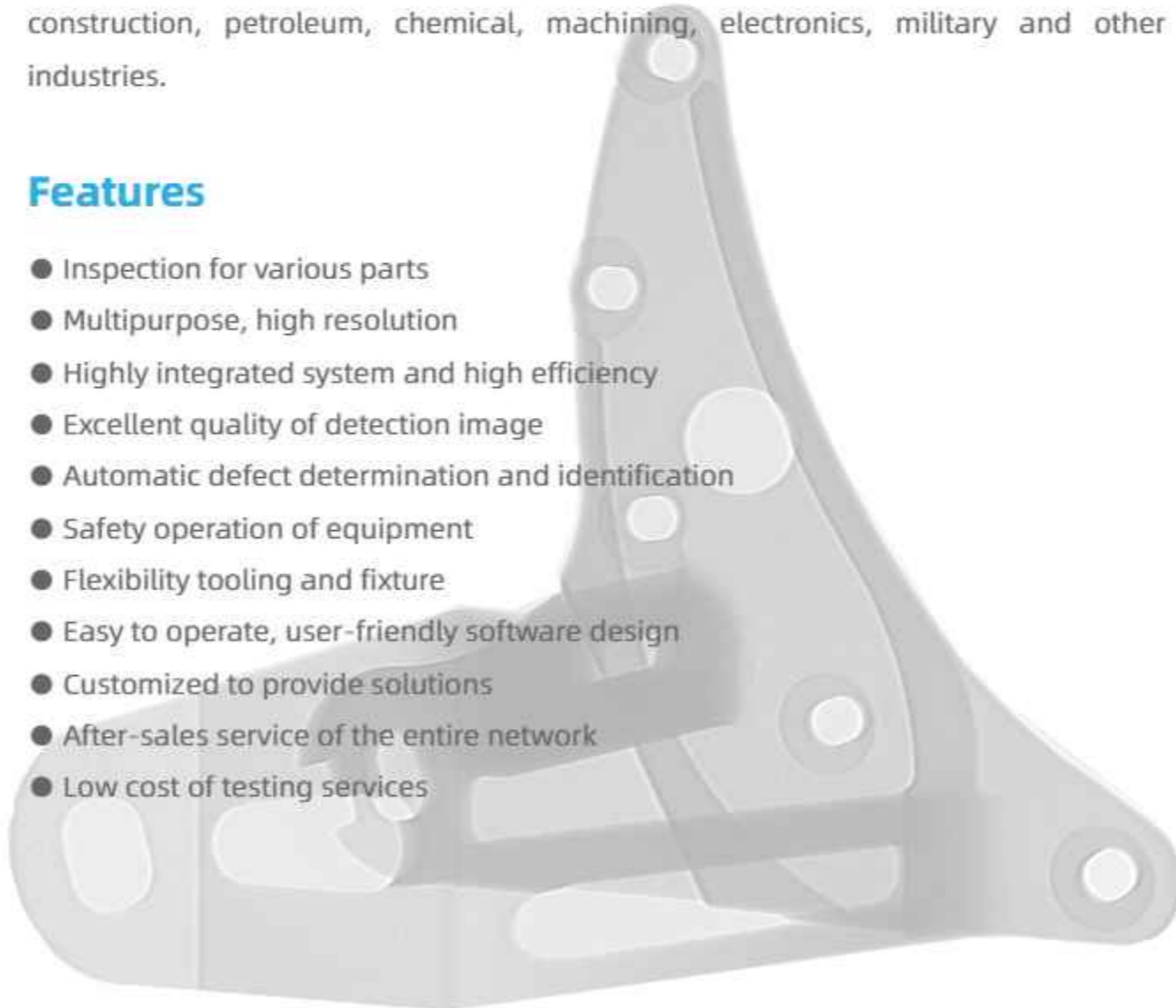
Online cylinder X-ray Real-time Imaging detection system

Introduction

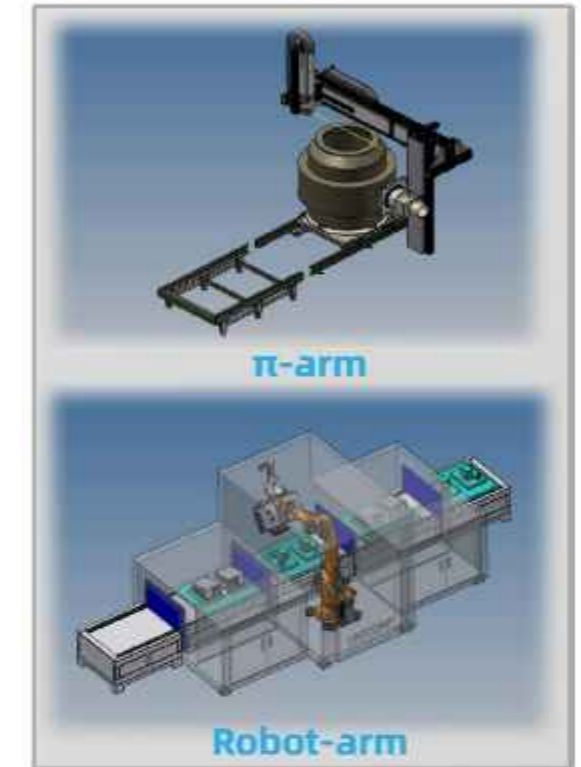
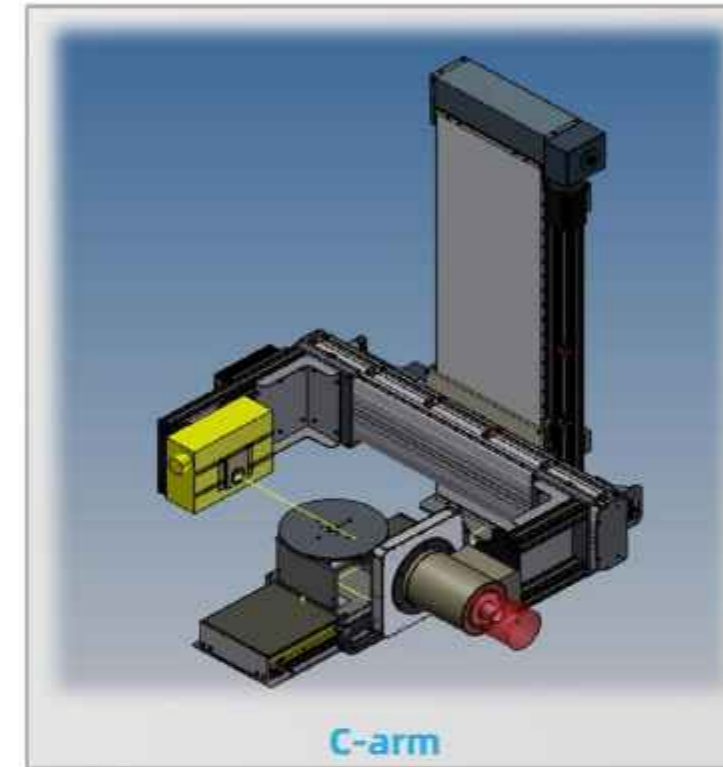
UNC series X-ray real-time imaging detection equipment of Unicom Technology is the standardized one for industrial NDT, together with Unicom's rich experience as to the designing of customized X-ray and solutions, this series could conduct detection during the process of manufacturing, scientific research, project development to well guarantee the quality of products. The technology and equipment are widely applied in automobile manufacturing(Aluminum castings, iron castings etc.),Oil pipeline weld inspection, hardware components, aerospace components, pressure vessels, construction, petroleum, chemical, machining, electronics, military and other industries.

Features

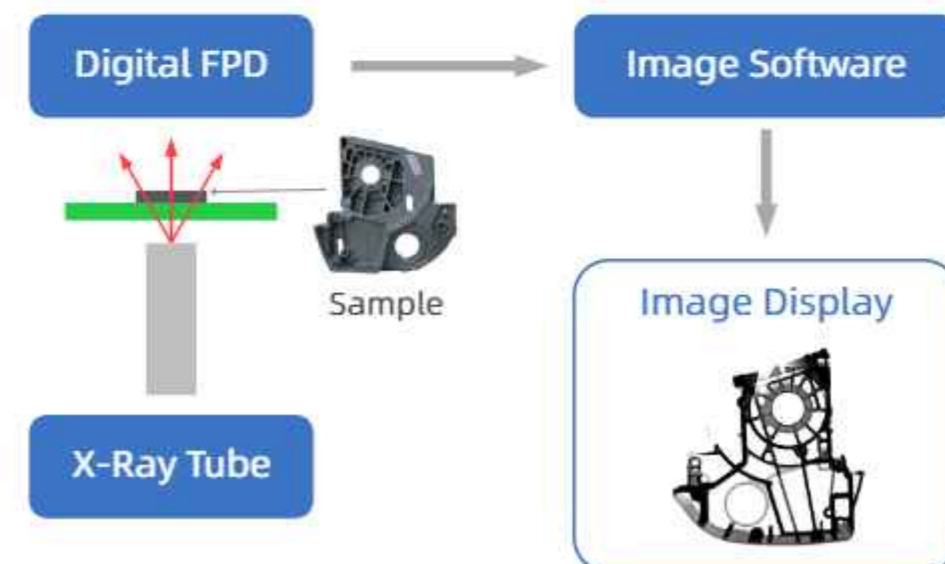
- Inspection for various parts
- Multipurpose, high resolution
- Highly integrated system and high efficiency
- Excellent quality of detection image
- Automatic defect determination and identification
- Safety operation of equipment
- Flexibility tooling and fixture
- Easy to operate, user-friendly software design
- Customized to provide solutions
- After-sales service of the entire network
- Low cost of testing services



Multi-type manipulator



Detection Principle

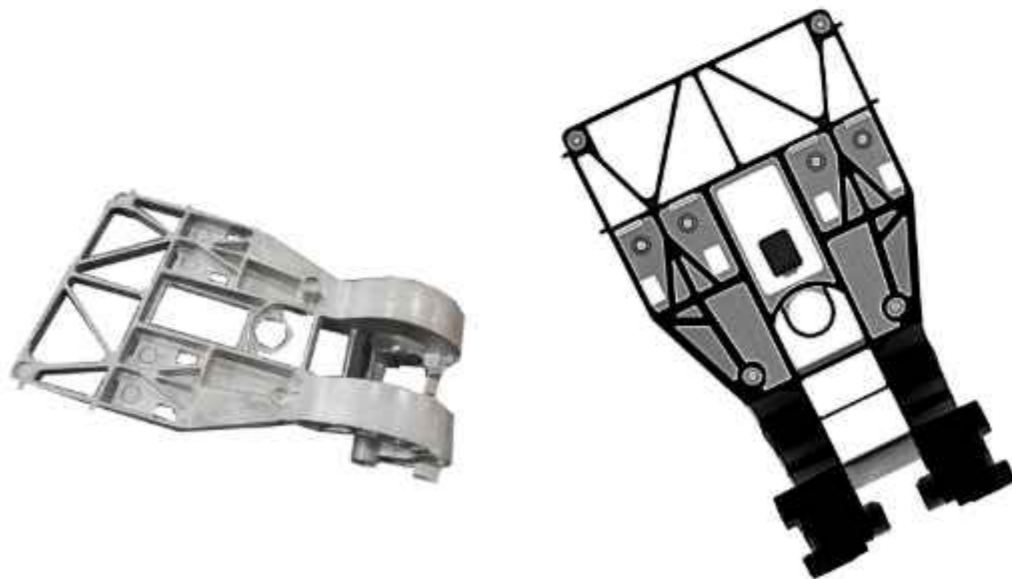




UNC 160

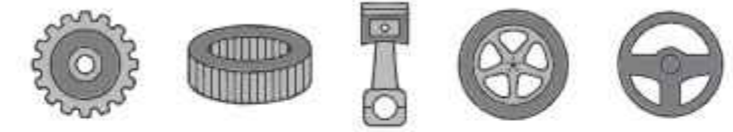
Automotive Parts NDT Real-time Imaging X-ray

X-RAY IMAGE



APPLICATION

- Aluminum castings, iron castings
- Auto parts
- Metal products, refractory materials



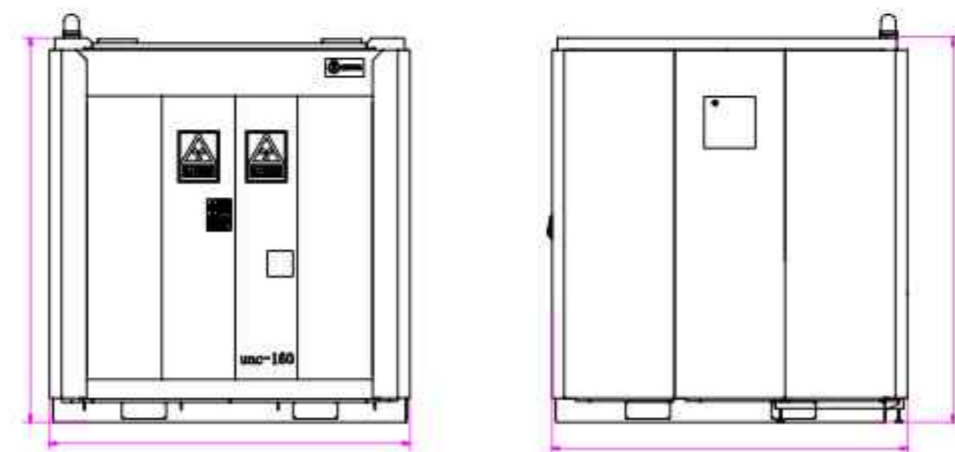
TECHNICAL SPEC

System Parameters	
Dimensions	2100mm*2080mm*2080mm(L*W*H)
Equipment weight	3.8T
Power	6kW
Maximum penetration (AL)	110mm
Detection range	Φ600*800mm
Load weight	50kg
Work environment	5-40° ≤80%HR
Power supply	Three-phase five wire system AC380V
X-ray leakage dose rate	≤1μSv/h
X-ray Generator	
Tube voltage	160kV
Power	480W
Focal size	0.5mm
Detector (FPD)	
Image area	17"×17"
Pixel matrix	3072×3072
Pixel pitch	139μm
Frame rate	2fps (1×1)

FEATURES

- Widely application, suit for different types samples inspection
- Working stable and high inspection efficiency
- Option for CT and ADR

MACHINE FOOTPRINT



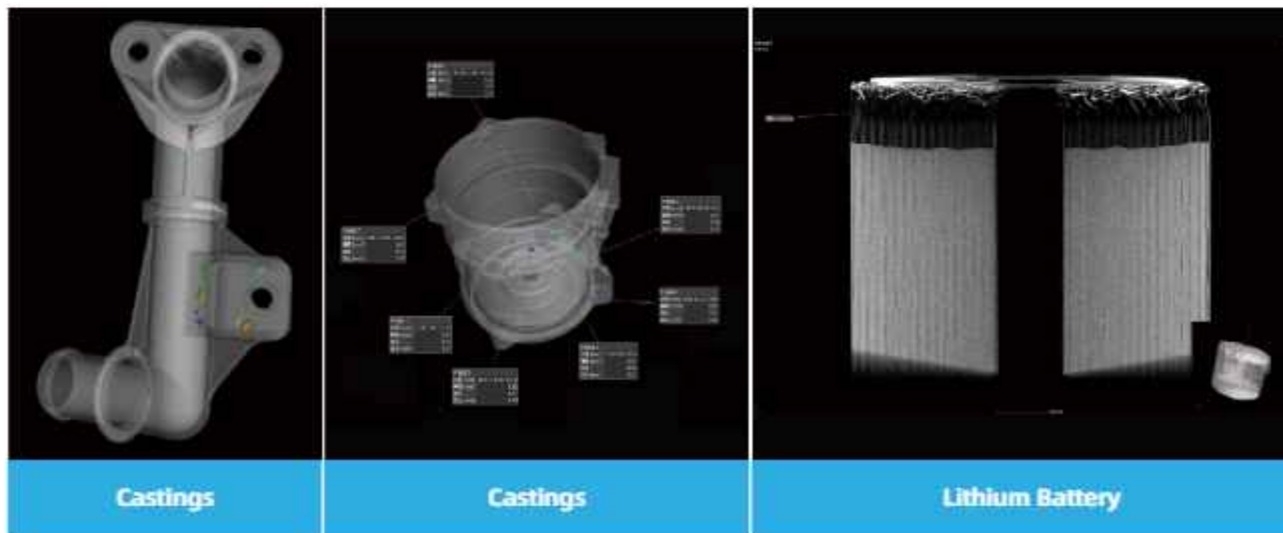


UNCT 1000 Industrial 3D CT NDT X-Ray

APPLICATION

- small size castings and metals
- Lithium batteries
- Chips
- Electronics
- Composite samples
- Resin
- Rocks
- Lands
- Fossil
- Biological samples, etc.

X-RAY IMAGE



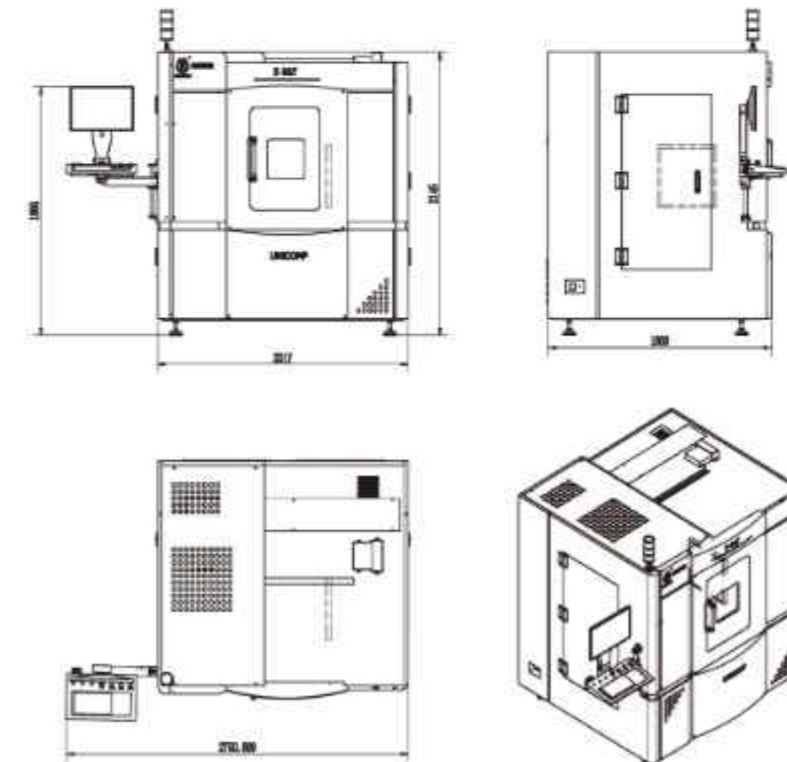
TECHNICAL SPEC

System Parameters	
Footprint	2017(W)×1800(D)×2145(H)mm
Machine Weight	≈ 4000 kg
Power Supply	AC 380V, 50/60Hz
Power Consumption	9 kW
X-Ray Safety	<1μSv/h (Meets All International Standards)
Console	Highly intergrated design
X-ray Generator	
Tube Type	Sealed
Focus Spot Size	0.5
Voltage	0~160kV (Adjustable)
Tube Consumption	480W
Imaging System	
Detector	A-Si
Effective Detection Area	427*427mm
Pixel Size	139μm
Pixel Matrix	3072*3072
Motion Control System	
Max. Inspection Area	φ550*550mm
Max. Loading Weight	10 kg

Software Function

Coordinate measurement module, design parts/objects comparison module, wall thickness analysis module, pore inclusion analysis module, expanded version of pore/inclusion analysis module, fiber composite material analysis module, expanded version of pore/inclusion analysis module, manufacturing geometry correction module, volume grid calculation module, structural mechanics simulation module, transfer field simulation module and other functions are optional.

MACHINE FOOTPRINT



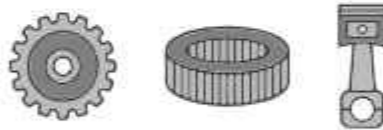


UNC 160S

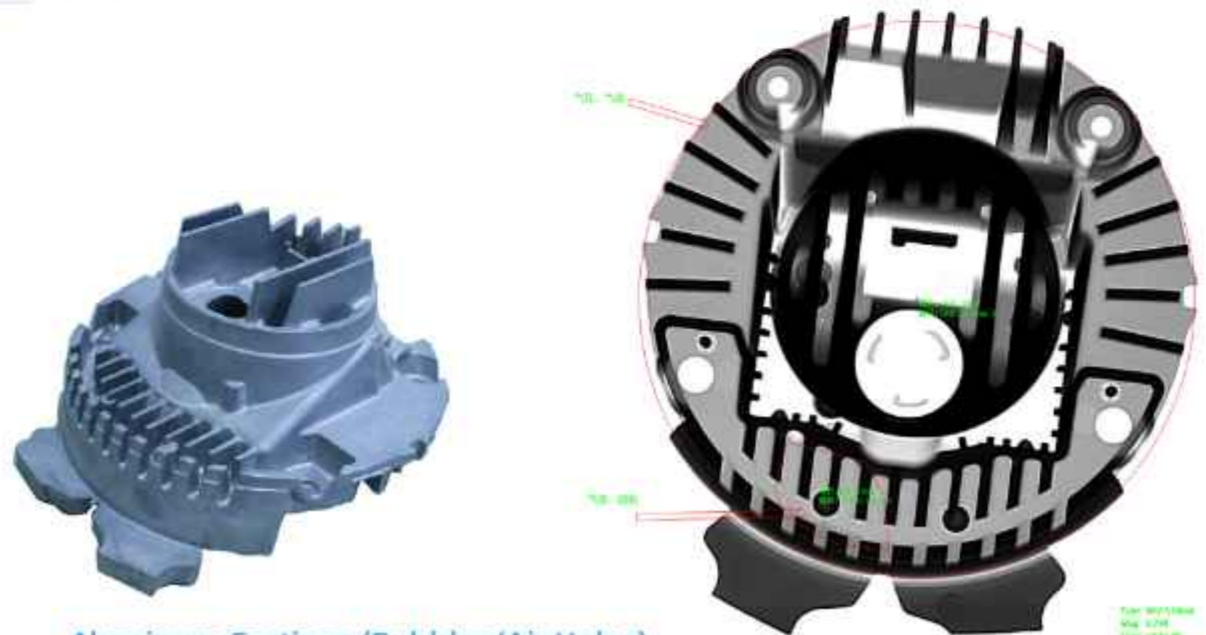
Small Casting NDT Real-time Imaging X-ray Equipment

APPLICATION

- Aluminum castings, iron castings
- Auto parts
- Metal products, refractory materials



X-RAY IMAGE



Aluminum Castings (Bubbles/Air Holes)

TECHNICAL SPEC

System Parameters	
Dimensions	1580mm*1160mm*2050mm (L*W*H)
Equipment weight	1.7T
Power	3kW
Maximum penetration (AL/FE)	100mm/20mm
Detection range	Φ300*300mm
Load weight	15kg
Work environment	5-40° ≤80%HR
Power supply	AC220V±5% 50HZ
X-ray leakage dose rate	≤1μSv/h
X-ray Generator	
Tube voltage	160kV
Power	200W
Focal size	0.5mm
Detector (FPD)	
Image area	130mm×80mm
Pixel matrix	1024×640
Pixel pitch	127μm
Frame rate	45fps (1×1) 85 fps (2×2)

Software Function

Image processing: brightness and contrast adjustment; stacking frames, window width and level adjustment; image enhancement, filtering, sharpening, invert, relief and bubble measure; ove, zoom in, zoom out, display image scaling, display the current mouse coordinates and gray values

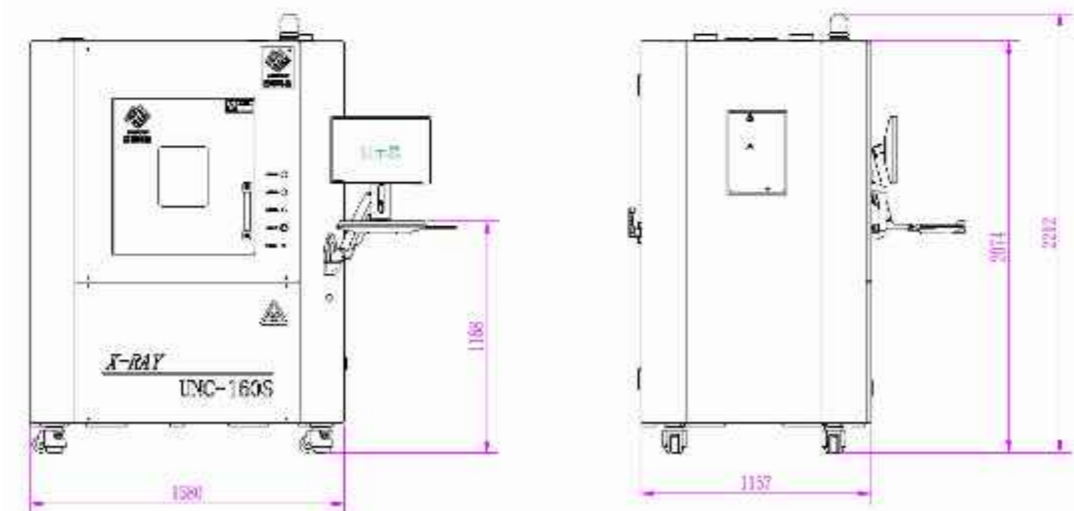
Image measurement: distance, radius, polygon, angle measurement; arrows and text labels; save the image after processing;

Motion control: the speed adjustment of each moving axis; CNC programming; manual operation;

Additional function

- CNC programmable control, to save the detection time of the bulk of the workpiece.
- Customizable fixture.
- Servo stepper motor drive, stable operation.
- Voltage regulator, isolation, filtering, grounding and other protective functions are complete.
- Set aside industrial cloud interface, data and pictures in real time upload, with traceability and large data analysis (optional).

MACHINE FOOTPRINT





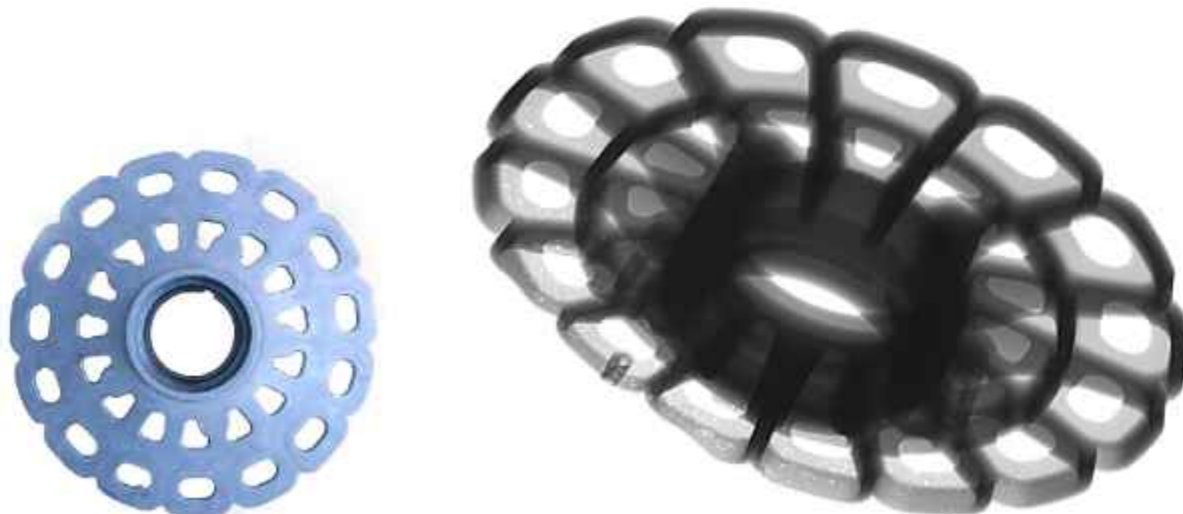
UNC 130

Precision Casting NDT Real-time Imaging X-ray

APPLICATION

- Aerospace, automotive parts
- Precision casting, metal products, plastic products
- Electronic components, ceramics, etc.

X-RAY IMAGE



Aluminum casting (loose)

TECHNICAL SPEC

System Parameters	
Dimensions	1602mm*1296mm*2148mm(L*W*H)
Equipment weight	2T
Power	5kW
Maximum penetration (AL/FE)	50mm
Detection range	Φ300*400mm
Load weight	30kg
Work environment	5-40° ≤80%HR
Install Power	AC220V±5% 50HZ
X-ray leakage dose rate	≤1μSv/h
X-ray Generator	
Tube voltage	130kV
Power	65W
Focal size	<5μm
Detector (FPD)	
Image area	130mm×80mm
Pixel matrix	1024*640
Pixel pitch	127μm
Frame rate	45fps (1*1) 85fps(2*2)

Software Function

Image processing: brightness and contrast adjustment; stacking frames, window width and level adjustment; image enhancement, filtering, sharpening, invert, relief and bubble measure; ove, zoom in, zoom out, display image scaling, display the current mouse coordinates and gray values

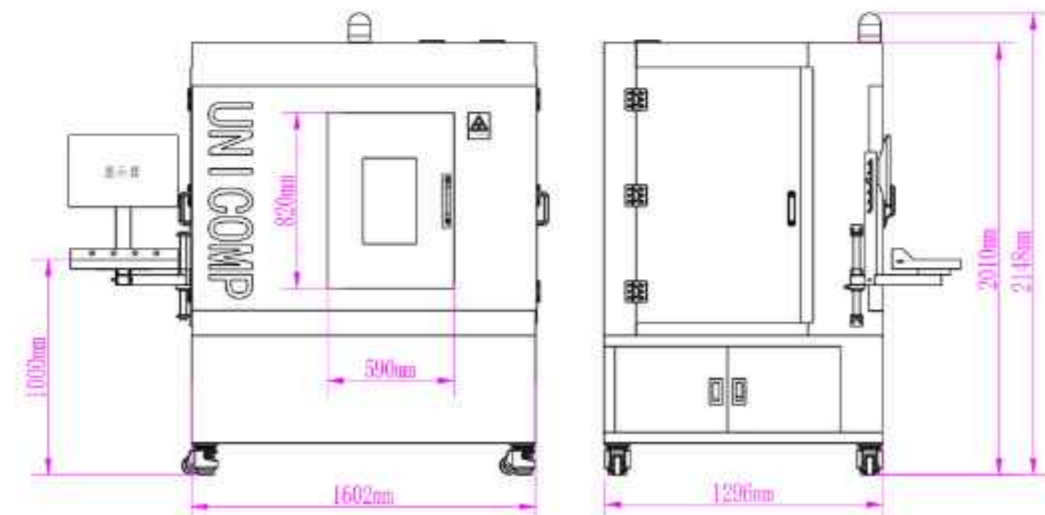
Image measurement: distance, radius, polygon, angle measurement; arrows and text labels; save the image after processing;

Motion control: the speed adjustment of each moving axis; CNC programming; manual operation;

Additional function

- High resolution, subtle defect recognition ability to upgrade with the imported 6um micro focus source.
- Save the detection time of the bulk of the work piece via the CNC programmable control.
- No dead angle detection with C-arm five-axis motion detection mechanism.
- Servo stepper motor drive to make the operation fast & stability
- Voltage regulator, isolation, filtering, grounding and other protective functions are complete
- Set aside industrial cloud interface, data and pictures in real time upload, with traceability and large data analysis function (optional).

MACHINE FOOTPRINT





UNC225π

General Utilization NDT Real-time Imaging X-ray

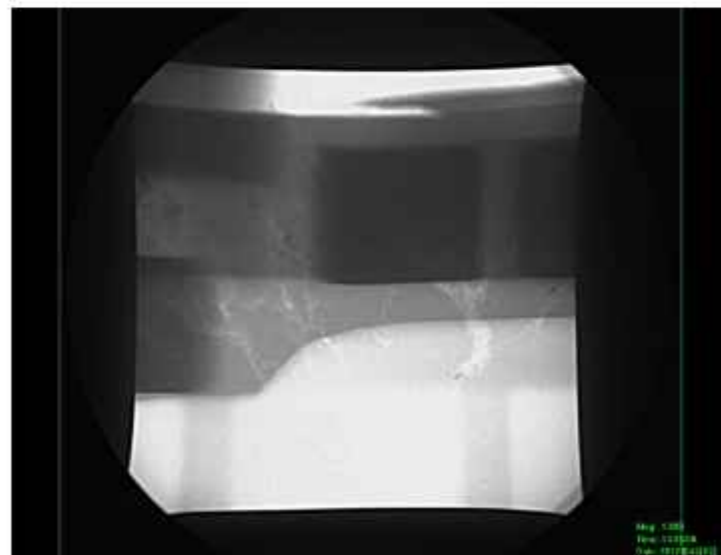
APPLICATION

- Large shell aluminum casting
- High voltage switch shell
- Epoxy resin material

X-RAY IMAGE



Battery Motor Housing
(loose, slag)



TECHNICAL SPEC

System Parameters	
Dimensions	3200mm*3873mm*3277mm (L*W*H)
Equipment weight	8.5T
Power	9kW
Maximum penetration (AL/FE)	150mm/25mm
Detection range	Φ1200*1200mm
Load weight	300kg
Work environment	5-40° ≤80%HR
Power supply	Three-phase five wire system AC380V
X-ray leakage dose rate	≤1μSv/h
X-ray Generator	
Tube voltage	225kV
Power	800W/1800W
Focal size	0.4mm/1.0mm
Detector (FPD)	
Image area	250mm×300mm
Pixel matrix	1792×2176
Pixel pitch	139μm
Frame rate	9fps (1×1) 30fps (2×2)

Software Function

Image processing: brightness and contrast adjustment; stacking frames, window width and level adjustment; image enhancement, filtering, sharpening, invert, relief and bubble measure; ove, zoom in, zoom out, display image scaling, display the current mouse coordinates and gray values

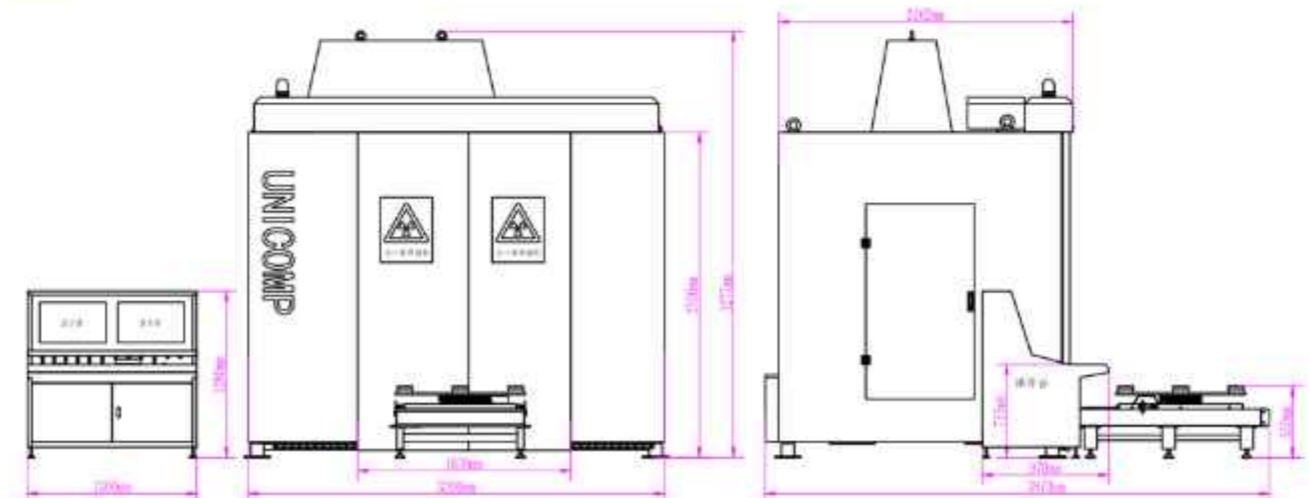
Image measurement: distance, radius, polygon, angle measurement; arrows and text labels; save the image after processing;

Other: Set the camera rotation screen;exposure time:static, dynamic image display, save, video display, save.

Additional function

- Catch tool car can be completely out of the protective lead room, easy up and down lifting.
- X-Ray tube can be extended into the detected parts, single / double check through the material everywhere.
- Drive motor frequency control, unlimited speed control.
- Lead door with anti-folder function and chain protection, protection equipment and staff.
- Voltage regulator, isolation, filtering, grounding and other protective functions are complete.
- Set aside industrial cloud interface, data and pictures in real time upload, with traceability and large data analysis function (optional).

MACHINE FOOTPRINT



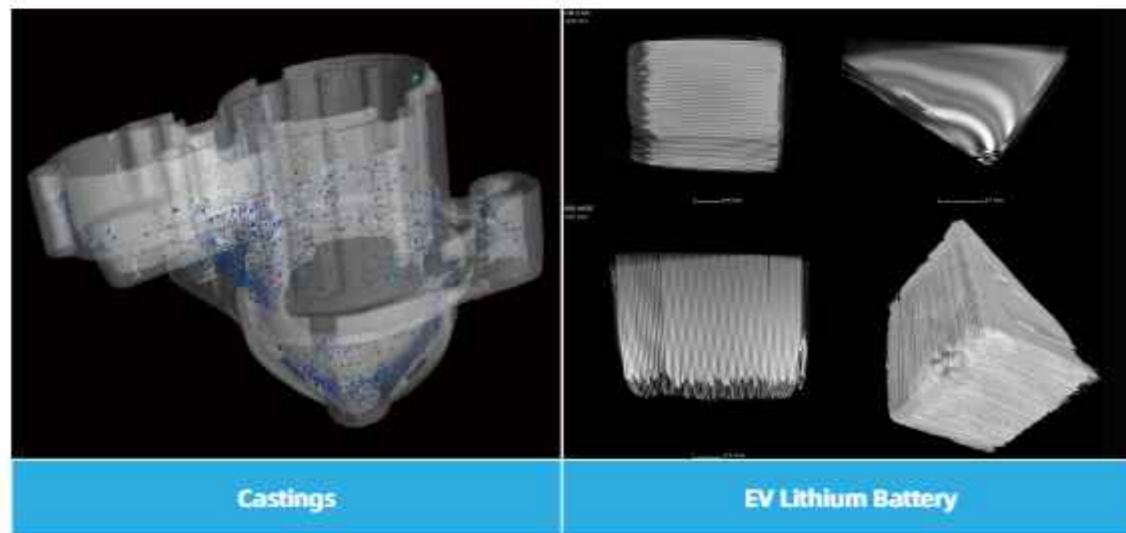


UNCT 2000
Industrial 3D CT NDT X-Ray

APPLICATION

- small size castings and metals
- Lithium batteries
- Chips
- Electronics
- Composite samples
- Resin
- Rocks
- Lands
- Fossil
- Biological samples, etc.

X-RAY IMAGE



Castings

EV Lithium Battery

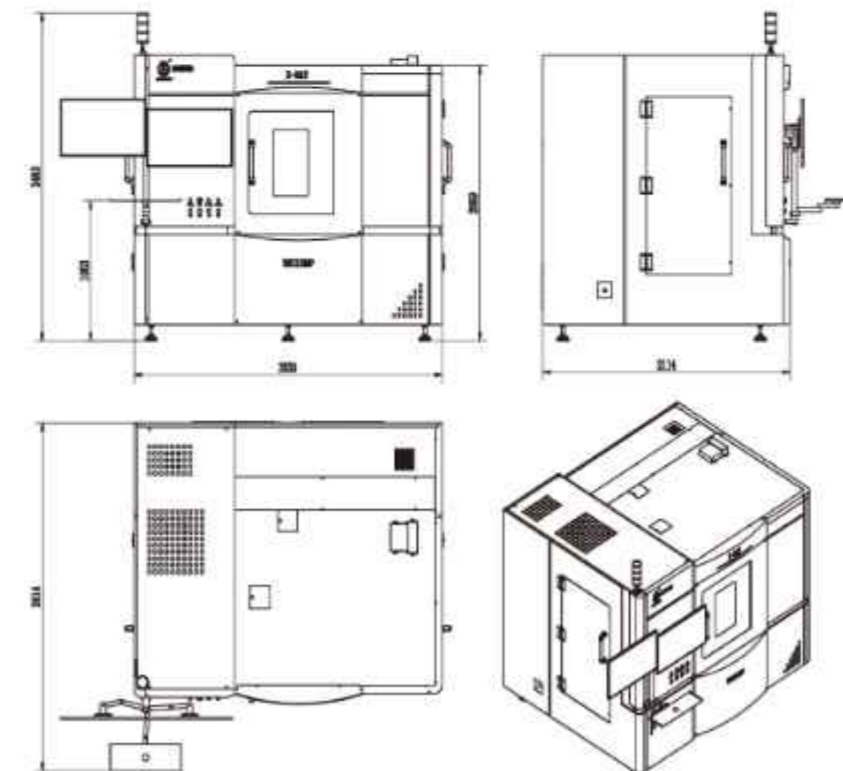
TECHNICAL SPEC

System Parameters	
Footprint	2635(W)×2114(D)×2069(H)mm
Machine Weight	≈ 6000 kg
Power Supply	AC 380V, 50/60Hz
Power Consumption	9 kW
X-Ray Safety	<1μSv/h (Meets All International Standards)
Console	Highly intergrated design
X-ray Generator	
Tube Type	Separated Type
Focus Spot Size	< 4μm
Voltage	0~225kV (Adjustable)
Tube Consumption	320W
Imaging System	
Detector	A-Si
Effective Detection Area	427*427mm
Pixel Size	139μm
Pixel Matrix	3072*3072
Motion Control System	
Max. Inspection Area	Φ300*500mm
Max. Loading Weight	30 kg

Software Function

Coordinate measurement module, design parts/objects comparison module, wall thickness analysis module, pore inclusion analysis module, expanded version of pore/inclusion analysis module, fiber composite material analysis module, expanded version of pore/inclusion analysis module, manufacturing geometry correction module, volume grid calculation module, structural mechanics simulation module, transfer field simulation module and other functions are optional.

MACHINE FOOTPRINT





UNC 320

Aluminum & Iron Casting NDT Real-time Imaging X-ray

APPLICATION

- Engineering components
- Aluminum castings, iron castings, auto parts
- The steel pipe, steel cylinder, pressure vessel



X-RAY IMAGE



Aluminum castings (Porosity)

TECHNICAL SPEC

System Parameters	
Dimensions	2290mm*1604*2598mm (L*W*H)
Equipment weight	7.5T
Power	9kW
Maximum penetration (FE)	48mm
Detection range	Φ500*800mm
Load weight	150kg
Work environment	5-40° ≤80%HR
Power supply	Three-phase five wire system AC380V
X-ray leakage dose rate	≤2.5μSv/h
X-ray Generator	
Tube voltage	320kV
Power	800W/1800W
Focal size	0.4mm/1.0mm
Detector (FPD)	
Image area	250mm×300mm
Pixel matrix	1792×2176
Pixel pitch	139μm
Frame rate	9fps (1×1) 30 fps (2×2)

Software Function

Image processing: brightness and contrast adjustment; stacking frames, window width and level adjustment; image enhancement, filtering, sharpening, invert, relief and bubble measure; ove, zoom in, zoom out, display image scaling, display the current mouse coordinates and gray values;

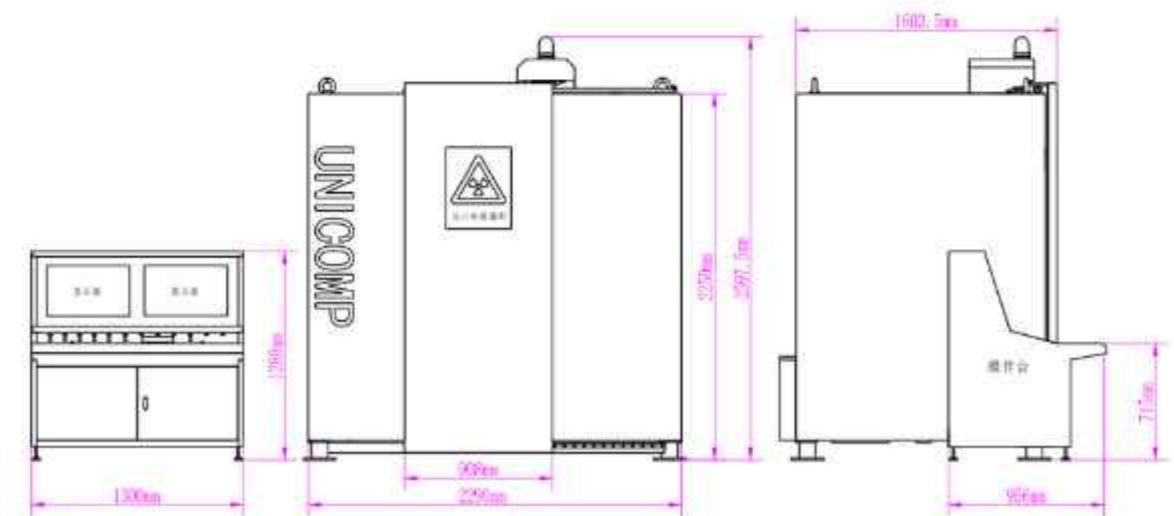
Image measurement: distance, radius, polygon, angle measurement; arrows and text labels; save the image after processing;

Other: Set the camera rotation screen;exposure time:static, dynamic image display, save, video display, save.

Additional function

- CNC programmable control, to save the detection time of the bulk of the workpiece
- C type arm five detection mechanism, no dead angle detection
- Servo stepper motor drive, stable operation
- Voltage regulator, isolation, filtering, grounding and other protective functions are complete
- Set aside industrial cloud interface, data and pictures in real time upload, with traceability and large data analysis (optional)

MACHINE FOOTPRINT



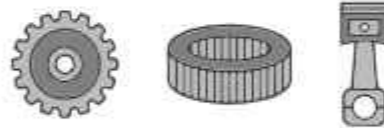


UNC 450

Ductile Iron NDT Real-time Imaging X-ray

APPLICATION

- Aluminum castings, ductile iron,
- Auto parts, engineering components
- The steel pipe, steel cylinder, pressure vessel



X-RAY IMAGE



Car brake chassis (loose)

TECHNICAL SPEC

System Parameters	
Dimensions	2423mm*2294mm*2586mm (L*W*H)
Equipment weight	18.65T
Power	9kW
Maximum penetration (FE)	60mm
Detection range	Φ500*800mm
Load weight	200kg
Work environment	5-40° ≤80%HR
Power supply	Three-phase five wire system AC380V
X-ray leakage dose rate	≤2.5μSv/h
X-ray Generator	
Tube voltage	450kV
Power	700W/1500W
Focal size	0.4mm/1.0mm
Detector (FPD)	
Image area	250mm×300mm
Pixel matrix	1792×2176
Pixel pitch	139μm
Frame rate	9fps (1×1) 30 fps (2×2)

Software Function

Image processing: brightness and contrast adjustment; stacking frames, window width and level adjustment; image enhancement, filtering, sharpening, invert, relief and bubble measure; ove, zoom in, zoom out, display image scaling, display the current mouse coordinates and gray values;

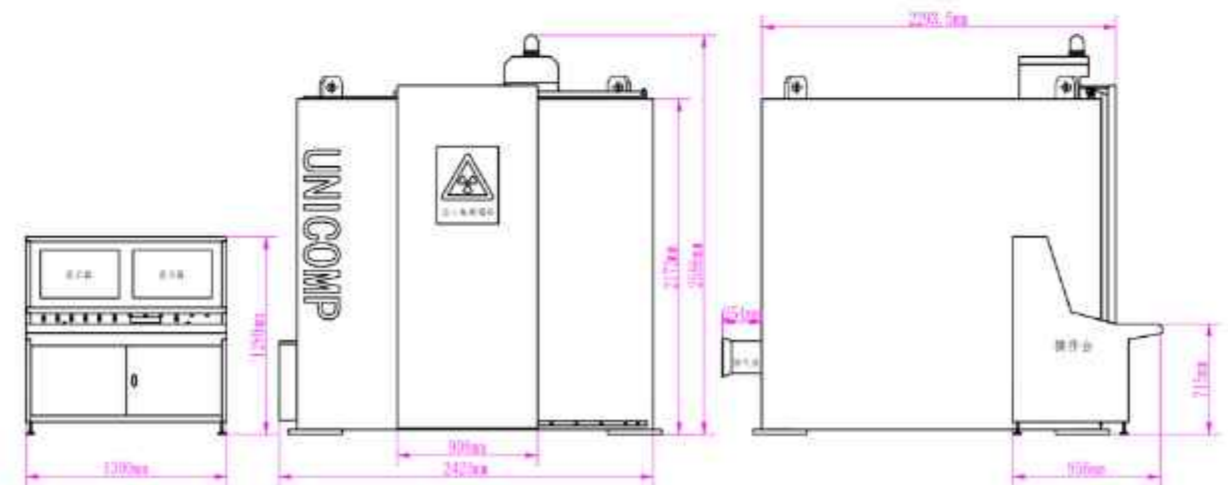
Image measurement: distance, radius, polygon, angle measurement; arrows and text labels; save the image after processing;

Other: Set the camera rotation screen;exposure time:static, dynamic image display, save, video display, save.

Additional function

- CNC programmable control, to save the detection time of the bulk of the workpiece
- C type arm five detection mechanism, no dead angle detection
- Servo stepper motor drive, stable operation
- Voltage regulator, isolation, filtering, grounding and other protective functions are complete
- Set aside industrial cloud interface, data and pictures in real time upload, with traceability and large data analysis (optional)

MACHINE FOOTPRINT





UNC-160-C-L

General Utilization On-line NDT Real-time Imaging X-ray

APPLICATION

- The online detection of all kinds of aluminum castings, ball graphite cast iron, auto parts, hardware products products internal porosity, inclusions, porosity, cracks and other defects.

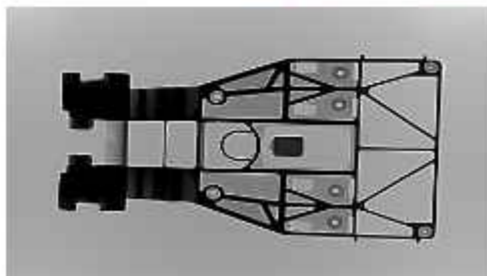
X-RAY IMAGE



Aluminum casting pipe (shrinkage)



Motor housing (shrinkage)



Auto parts (Porosity)

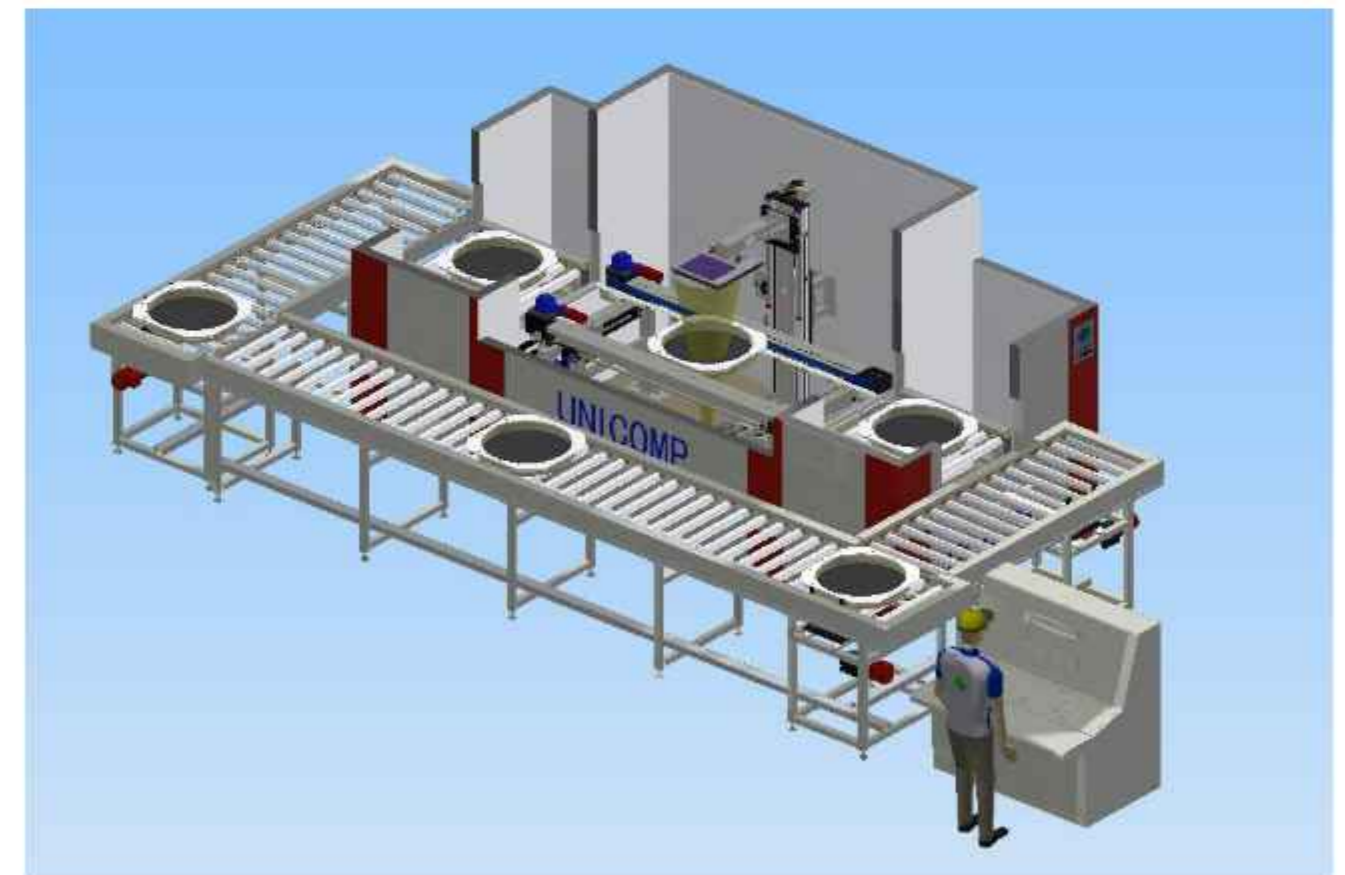


Gearbox section (Shrinkage)

FEATURES

- The implementation of automatic location detection
- Automatic identification of defect detection.
- The unqualified product identification marking
- OK and NG are sorting and recognition
- High contrast, high quality image detection
- Extended - modular design, strong, automatic loading and unloading
- Adopt the design of transmission mechanism of high speed positioning, multi axis motion detection method
- Custom fixture
- Can be in accordance with customer docking automatic production line, unattended operation
- The high detection efficiency, to achieve full detection
- The operation is simple and convenient.

3D DIAGRAM OF ON-LINE DETECTION EQUIPMENT





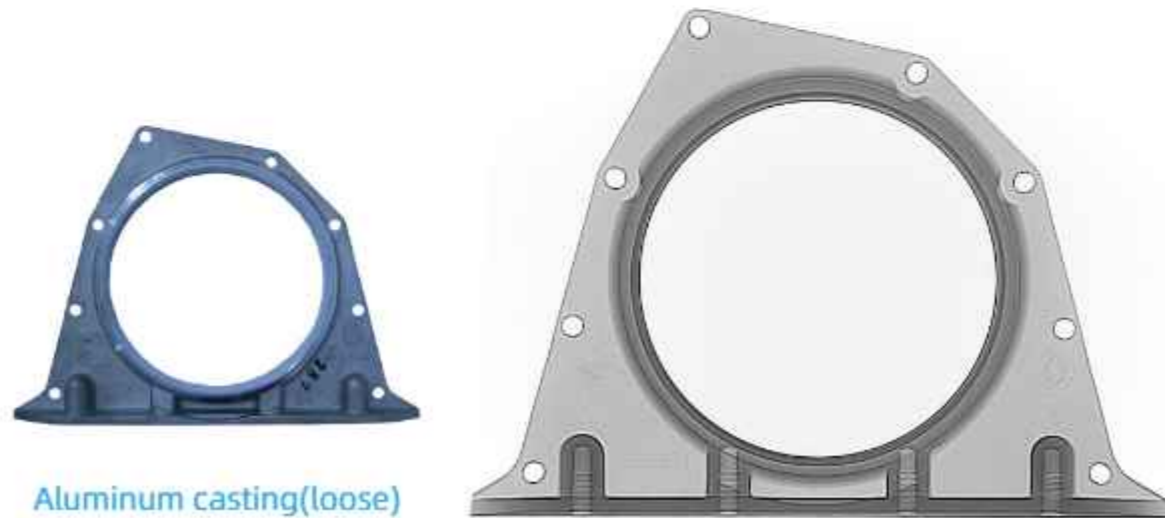
Cross Over Dual Manipulator NDT X-ray

APPLICATION

- Engineering components
- Small aluminum castings, iron castings
- Auto parts, metal products



X-RAY IMAGE



Aluminum casting(loose)

TECHNICAL SPEC

System Parameters	
Dimensions	2766mm*2813mm*2598mm(L*W*H)
Equipment weight	17.5T
Power	10kW
Maximum penetration (FE)	80mm
Detection range	Φ550*200mm
Load weight	30kg
Work environment	5-40° ≤80%HR
Power supply	Three-phase five wire system AC380V
X-ray leakage dose rate	≤2.5μSv/h
X-ray Generator	
Tube voltage	450kV
Power	700W/1500W
Focal size	0.4mm/1.0mm
Detector (FPD)	
Image area	250mm×300mm
Pixel matrix	1792×2176
Pixel pitch	139μm
Frame rate	9fps (1×1) 30 fps (2×2)

Software Function

Image processing: brightness and contrast adjustment; stacking frames, window width and level adjustment; image enhancement, filtering, sharpening, invert, relief and bubble measure;ove, zoom in, zoom out, display image scaling, display the current mouse coordinates and gray values;

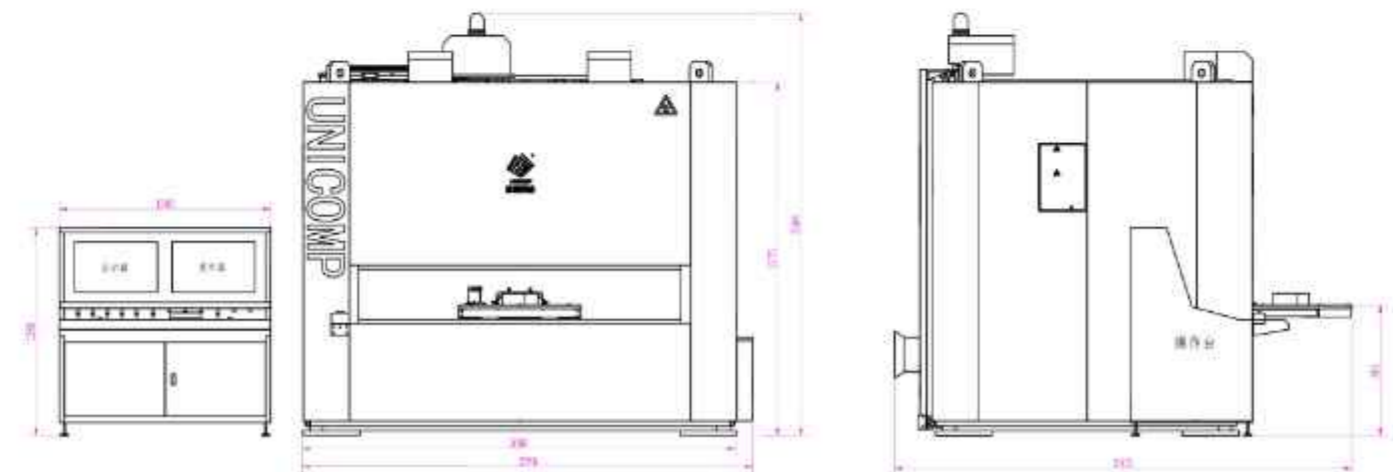
Image measurement: distance, radius, polygon, angle measurement; arrows and text labels; save the image after processing;

Other: Set the camera rotation screen;exposure time:static, dynamic image display, save, video display, save.

Additional function

- Mechanical modular design, free software upgrade
- Voltage regulator, isolation, filtering, grounding and other protective functions are complete
- Lead door has clip proof function and interlock protection to protect equipment and life safety
- Equipped with fully functional auxiliary measuring tools, various defects of casting can be effectively measured
- Set aside industrial cloud interface, data and pictures in real time upload, with traceability and large data analysis (optional)

MACHINE FOOTPRINT



TECHNICAL SPEC



UNI160-Y2-D9

Wheel Hub On-line NDT X-ray Real-time imaging Equipment

APPLICATION

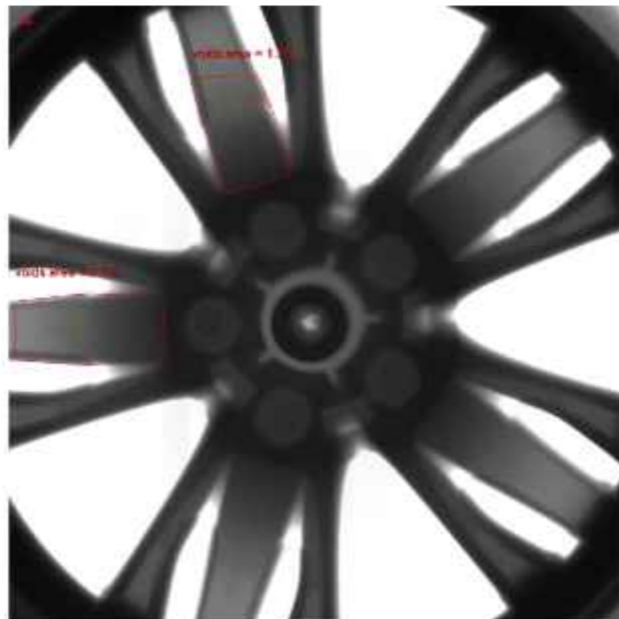
- 13" - 22" Size Wheel Hub Inspection
- 14" - 26" Size Wheel Hub Inspection



X-RAY IMAGE



Wheel hub



System Parameters		Detector (FPD)	
Dimensions	5430mm*2089mm*2733mm(L*W*H)	Image area	250mm*300mm
Equipment weight	6T	Pixel matrix	1792*2176
Power	8kW	Pixel pitch	139µm
Work	In-line continuous	Frame rate	9fps (1x1) 30fps (2x2)
Detection range	13"-22" Aluminum alloy wheel hub		
Detection speed	30s/ pcs (18") wheel		
Work environment	5-40° ≤80%HR		
Power supply	Three-phase five wire system AC380V		
X-ray leakage dose rate	≤1µSv/h		
X-ray Generator			
Tube voltage	225kV(160kV Selection)		
Power	800W/1800W		
Focal size	0.4mm/1.0mm		

Software Function

Image processing: brightness and contrast adjustment; stacking frames, window width and level adjustment; image enhancement, filtering, sharpening, invert, relief and bubble measure; ope, zoom in, zoom out, display image scaling, display the current mouse coordinates and gray values

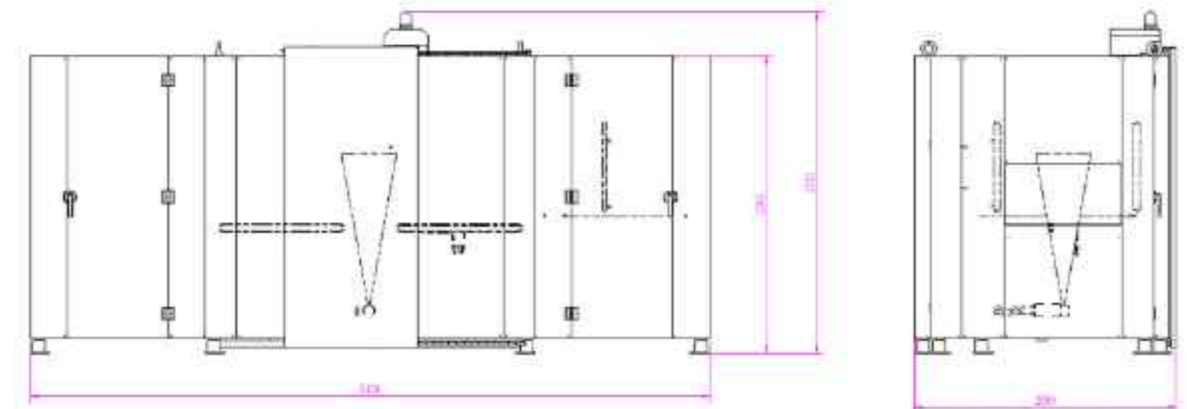
Image measurement: distance, radius, polygon, angle measurement; arrows and text labels; save the image after processing;

Motion control: the speed adjustment of each moving axis; CNC programming; manual operation; Automatic identification of the wheel hub, automatic calculation of the bubble;

Additional function

- Wheel clamping synchronous drive to make sure the precise control.
- Intelligent algorithm with X-Ray source and the flat panel walking swing angle.
- New wheel hub test has teaching function, manual setting, automatic save functions
- Automatic wheel hub and software self matching.
- Mechanical modular design and compatible with 160KV/225KV x-ray source with 9 inch tablet intensifier and installation.
- Automatic calculate the bubble of the wheel hub, set aside the output interface of the automatic sorting.
- Set aside industrial cloud interface, data and pictures in real time upload, with traceability and large data analysis function (optional).

MACHINE FOOTPRINT





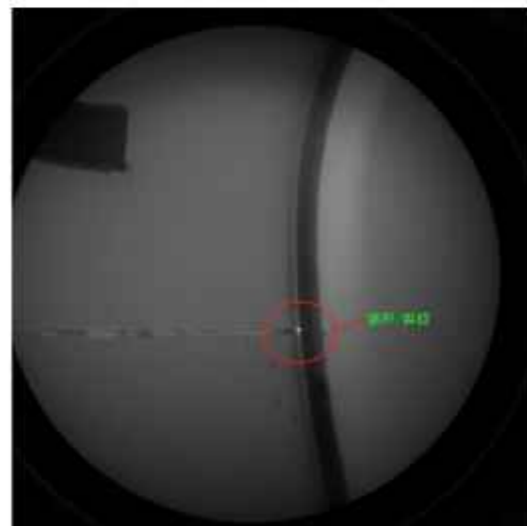
UNC 225-05C5-F

Online cylinder X-ray real-time imaging detection system

APPLICATION

- Steel cylinders, pressure vessels

X-RAY IMAGE



Cylinder (missing welding)

TECHNICAL SPEC

System Parameters

Dimensions	3250mm*1710mm*2450mm(L*W*H)	
Equipment weight	6T	
Power	8kW	
Maximum penetration (AL/FE)	230mm/25mm	
Detection range	Φ500*2000mm	
Load weight	200kg	
Work environment	5-40° ≤80%HR	
Power supply	Three-phase five wire system AC380V	
X-ray leakage dose rate	≤1μSv/h	

X-ray Generator

Tube voltage	225kV
Power	800W/1000W
Focal size	0.4mm/1.0mm

Detector (FPD)

Image area	250mm×300mm
Pixel matrix	1792×2176
Pixel pitch	139μm
Frame rate	9fps (1×1) 30 fps (2×2)

Software Function

Image processing: brightness and contrast adjustment; stacking frames, window width and level adjustment; image enhancement, filtering, sharpening, invert, relief and bubble measure;ove, zoom in, zoom out, display image scaling, display the current mouse coordinates and gray values;

Image measurement: distance, radius, polygon, angle measurement; arrows and text labels; save the image after processing;

Other: Set the camera rotation screen;exposure time:static, dynamic image display, save, video display, save.

Additional function

- Automatic marking, automatic sorting
- Regulatory, isolation, filtering, grounding and other protection functions
- Lead doors have anti-pinch function and chain protection to protect equipment and human life
- Mechanical modular design, compatible with 160kV/225kV ray source
- Reserved industrial cloud interface, real-time upload of data and pictures, traceability and big data analysis(optional)

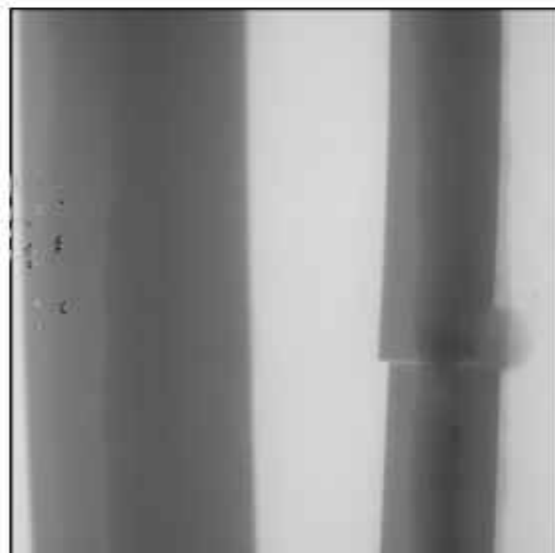


Weld joint X-ray real-time imaging inspection equipment

APPLICATION

- pipeline, tank
- Large pressure vessel

X-RAY IMAGE



TECHNICAL SPEC

System Parameters	
Maximum penetration	48mm
Detection range	Φ200*2000mm length≤12.5m
Loading capacity	≤10T
Work environment	5-40° ≤80%HR
Power supply	Three-phase five wire system AC380V
X-ray leakage dose rate	≤2.5μSv/h

X-ray System	Detector (FPD)
X-ray tube	160kV-320kV(Optional)
Power	800W/1800W
Focal size	0.4mm/1.0mm
Image area	215mm×215mm
Pixel matrix	1792×2176
Pixel pitch	139μm
Frame rate	9fps (1×1)

Software Function

Image processing: brightness and contrast adjustment; stacking frames, window width and level adjustment; image enhancement, filtering, sharpening, invert, relief and bubble measure;ove, zoom in, zoom out, display image scaling, display the current mouse coordinates and gray values

Image measurement: distance, radius, polygon, angle measurement; arrows and text labels;

Motion control: the speed adjustment of each moving axis; CNC programming; Manual/automatic operation;

Additional function

- Specialized according to customer needs
- Set aside industrial cloud interface, data and pictures in real time upload, with traceability and large data analysis (optional)

CLOUD PLATFORM

Unicomp Technology Cloud Information Platform allows users to create data monitoring and analysis systems of any size. The platform provides a simple and fast application environment for users to develop engineering projects in a common computer. The created project can be directly accessed by PCs, smartphones, tablets, etc. on the network. The server does not need a WEB server such as IIS. The client does not need any basic installation, only a browser is required. Users can access data, statistical analysis, and real-time supervision in real time.



Detect image information and upload the device status to the cloud platform in real time, so that users can access it conveniently and reliably!

The classification, analysis and integration of the data stored on the cloud platform can form a corresponding visual analysis chart.



Portable X-ray Flaw Detector

APPLICATION

Suitable for national defense, shipbuilding, petroleum, chemical, machinery, aerospace, and construction industries inspect for material such as hull, pipeline, high pressure vessel, boiler, aircraft, vehicles and bridges etc, spare parts welding quality, internal defects and various light metal, rubber, ceamic etc processing quality.

EQUIPMENT FEATURES

- Delayed exposure to keep safety
- Nice modeling, Reasonable structure
- Light-weight, Portable and convenient
- Work and rest with 1:1 time ratio
- Compact design, Anodic grounding, Forced air cooling



SYSTEM PARAMETERS

Directional Portable X-ray Detector(Ceramic X-ray tube)

Model	The output voltage(kV)	Power(kVA)	Fouce Size(mm)	Radiation Angle	Max Penetrating Power(Fe- mm)	Size(mm)	Weght(kg)
XXG-1605	50-160	1.8	1.5x1.5	40°+5°	20	220*220*560	20
XXG-2005	120-200	2.0	2.0x2.0	40°+5°	30	250*250*620	26
XXG-2505	150-250	2.5	2.0x2.0	40°+5°	40	260*260*740	28
XXG-3005	170-300	3.0	2.5x2.5	40°+5°	50	320*320*820	34
XXG-3505	200-350	3.5	2.5x2.5	40°+5°	60	320*320*820	35

Panoramic Portable X-ray Detector(Ceramic X-ray tube)

Model	The output voltage(kV)	Power(kVA)	Fouce Size(mm)	Radiation Angle	Max Penetrating Power(Fe- mm)	Size(mm)	Weght(kg)
XXGH-1605P	50-160	1.8	1.0 x 2.0	360°*25°	18	220*220*560	20
XXGH-1605Z	50-160	1.8	1.0 x 3.5	360°*30°	18	220*220*560	20
XXGH-2005P	120-200	2.0	1.0 x 2.0	360°*25°	28	250*250*620	26
XXGH-2005Z	120-200	2.0	1.0 x 3.5	360°*30°	25	250*250*620	26
XXGH-2505P	150-250	2.5	1.0 x 2.2	360°*25°	35	260*260*740	28
XXGH-2505Z	150-250	2.5	1.0 x 5.0	360°*30°	35	260*260*740	28
XXGH-3005P	170-300	3.0	1.0 x 2.5	360°*25°	45	320*320*820	34
XXGH-3005Z	170-300	3.0	1.0 x 6.0	360°*30°	45	320*320*820	34
XXGH-3505P	200-350	3.5	1.0 x 2.5	360°*25°	55	320*320*820	35
XXGH-3505Z	200-350	3.5	1.0 x 6.0	360°*30°	55	320*320*820	35

Directional Portable X-ray Detector(Glass X-ray tube)

Model	The output voltage(kV)	Power(kVA)	Fouce Size(mm)	Max Penetrating Power(Fe- mm)	Size(mm)	Weght(kg)
XXQ2005	100-200	2.0	1.0 x 3.5	30	275*275*665	20
XXQ2505	170-250	2.5	1.0 x 2.4	40	320*320*720	34
XXQ3005	170-300	3.0	1.0 x 2.3	50	340*340*820	38

Panoramic Portable X-ray Detector(Glass X-ray tube)

Model	The output voltage(kV)	Power(kVA)	Fouce Size(mm)	Max Penetrating Power(Fe- mm)	Size(mm)	Weght(kg)
XXH2005P	100-200	2.0	1.0 x 3.5	28	275*275*665	20
XXH2005Z	100-200	2.0	1.0 x 3.5	25	275*275*665	20
XXH2505P	170-250	2.5	1.0 x 2.4	35	320*320*720	34
XXH2505Z	170-250	2.5	1.0 x 2.4	35	320*320*720	34
XXH3005P	170-300	3.0	1.0 x 2.3	45	340*340*820	38
XXH3005Z	170-300	3.0	1.0 x 2.3	45	340*340*820	38

Valued Customers (Partial)



Installation cases (Partial)



NDT Real-time Imaging X-ray UNC225



UNC320



In-line UNC160



In-line UNC450



Aluminum Castings (Manipulator) NDT X-ray Equipment --UNC225



Customized equipment



UNC160



UNC160-T



UNC320



Customized equipment



Customized equipment