



# PG-810X-Ray

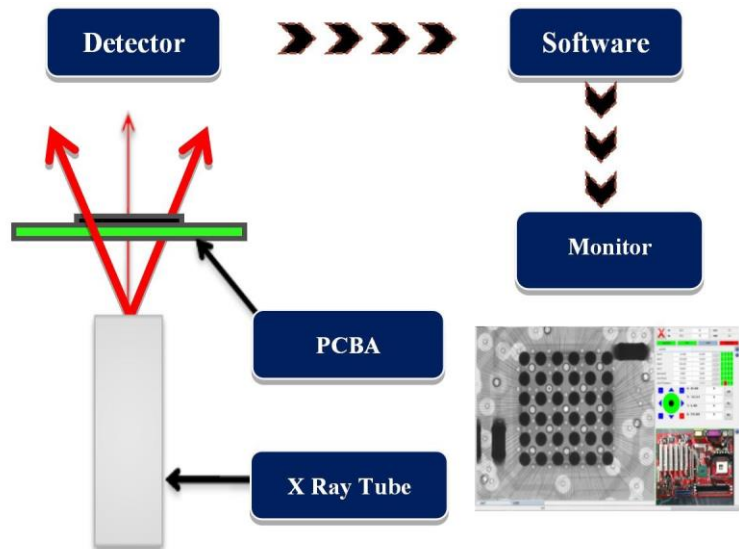
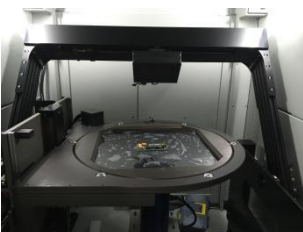
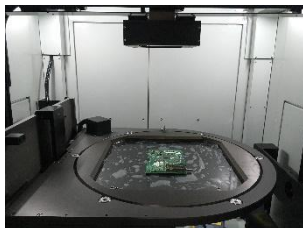
## Application

SMT, BGA, CSP, Flip Chip, LED Detection,  
Semiconductor, Packaging components, Battery Industry,  
Electronic components, Automotive parts, Photo-voltaic,  
Aluminium Die-casting, Moulding Plastic.  
Ceramics, other special industries.



## Features

- 90kV 5µm closed X-ray tube, high speed & Millions pixels high resolution FPD
- Tilt Angle  $\pm 360^\circ$  together with 3 axis movement
- Support Measuring Distance , Angle , Diameter , Polygon , PTH Filling Rate , etc
- Multi-function DXI image processing system, CNC programmable detection
- Pixel Size 49.5 µm inspection area 190mm\*165mm, with 200X Magnification



Item	Description	Specifications
X-Ray Tube	Max. Voltages, Type	90kV , Closed
	Power	Max Power 8W - Consumption 0.5 KW
	Focal Spot Size	5 $\mu$ m
	Magnification	200X
Detector	Detector Type	FPD
	Pixel Size	49.5 $\mu$ m
	Effective Area	50mm $\times$ 50mm
System Computer	Operating System	Industrial PC, Win 10, i7 Processor
	Monitor	22" LCD
Software	User Interface	Multi-function DXI image processing system
Working Platform	Max. Loading Area	235*220 mm
	Max. Inspection Area	190mm $\times$ 165mm
	Max. Loading Weight	5 kg
	Movement Control	Joysticks, Mouse and Keypads
Navigation	Camera	HD Camera, Laser point
Axis	Manipulator	3-axis with X / Y / Z
Equipment Features	Power Supply	AC 110~220V ( $\pm$ 10%) 50Hz, 2.0kW
	Outline Dimensions	1480(W) $\times$ 750(D) $\times$ 1680(H)mm
	System Weight	560 kg
Optional Accessories	All X-ray machines manufactured meet the FDA-CDRH Regulation CFR 21 1020.40 Subchapter J for cabinet x-ray systems. The FDA - CDRH standard for cabinet x-ray systems states that radiation emission will not exceed. 5millirem a /hr.2"from any external surface. Our machines ( <b>Leakage &lt;math&gt;&lt;1\mu\text{Sv/h}&lt;/math&gt;</b> ) are typically 5-10 times less than the international standards,	
Warranty	One year warranty , free replacement the parts due to original manufacturer's defect, but expect of man-made damages and force majeure	

