



PG-820 X-Ray

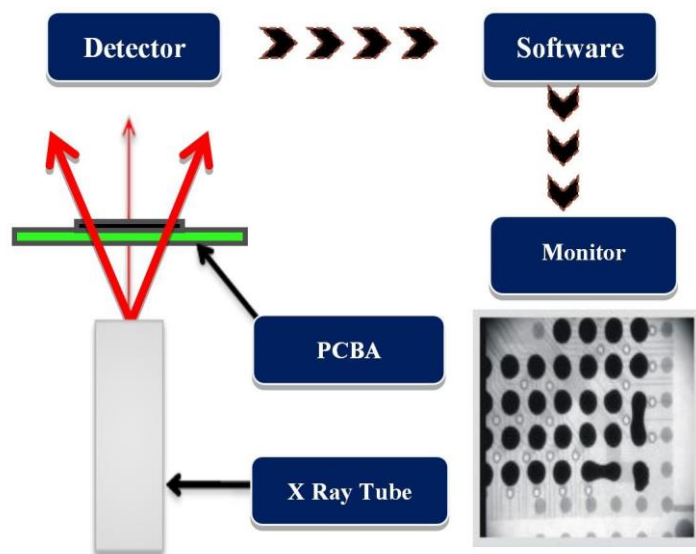
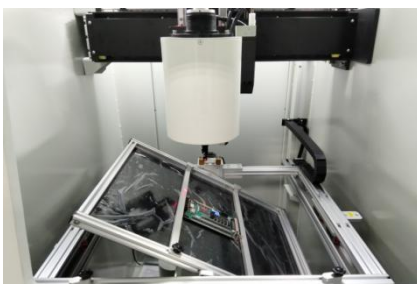
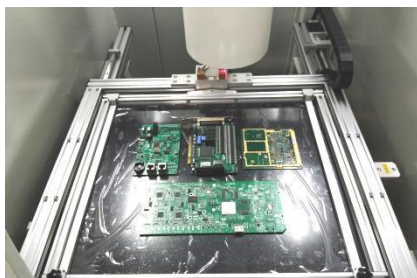
Application

BGA , CSP , Flip Chip, LED , Fuse, Diode, PCB
Semiconductor , Battery Industry , Small Metal
Casting, Electronic Connector Module, Cables,
Aerospace Components, Photovoltaic Industry,



Features

- 90kV 5 μ m closed X-ray tube, High resolution Digital Flat Panel 85 μ m pixel pitch with 16-bit ADC
- Multi-function workstation with $\pm 60^\circ$ tilt and X-Y multi-axis movement
- X-ray tube & detector automatic lifting and descending, with convenient target point positioning system
- Multi-function DXI image processing system, CNC programmable detection
- Max. loading area 510mm*420mm, max. inspection area 435mm*385mm, with 600X Magnification



Item	Description	Specifications
X-Ray Tube	Max. Voltages, Type	90kV, Closed
	Power Consumption	8W
	Focal Spot Size	5 μ m
	Motion range (Up and Down)	150mm
	Magnification	600X
Detector	Digital Flat Panel	High resolution 85 μ m pixel pitch with 16-bit ADC
	Detector Pixel Matrix	1536 \times 1536 pixels
	Effective Area	130mm \times 130mm
	Motion range (Up and Down)	290mm
System Computer	Operating System	Industrial PC, Win 10, i7 Processor
	Monitor	22" LCD
Software	User Interface	Unicomp Multi-function DXI image processing system
Working Platform	Max. Loading Area	510mm \times 420mm
	Max. Inspection Area	435mm \times 385mm
	Max. Loading Weight	10kg
	Movement Control	Joysticks, Mouse and Keypads
	Table Tilting Angle	\pm 60 $^{\circ}$
Navigation	Camera	HD Camera, Laser point
Axis	Manipulator	5-axis with X / Y / Z1 / Z2 / T
Equipment Features	Power Supply	AC 110~220V (\pm 10%) 50Hz, 1.0kW
	Footprint / Net Weight	1080(W) \times 1180(D) \times 1730(H)mm, 1050kg
	Package / Total Weight	Plywood Crate, 146(W) \times 128(D) \times 196(H)cm, 1160kg
Optional Accessories	1.Barcode Scanner;2.Dimension Measurement Gauge	
Warranty	One year warranty , free replacement the parts due to original manufacturer's defect, but expect of man-made damages and force manure	

X-Ray Image

